

## August Wren-inspired portraits

# Oh my GOUACHE

Lesson created by: **Heather Saalfeld Hagy**



Artwork by August Wren

*Jennifer Orkin Lewis, also known as August Wren, is a contemporary artist who works with gouache. In this lesson, we'll look at her portrait work and expressive style for inspiration to create portraits.*

Before you begin, introduce your students to Jennifer Orkin Lewis' art via her website [AugustWren.com](http://AugustWren.com). Discuss what your students find interesting about her portraits (like the ones shown on this page). Discuss Wren's style such as how she simplifies shapes, her use of color, and whimsical way of painting.



### STANDARDS ADDRESSED:

- VA.68.S.1.4 - Use accurate art vocabulary to explain the creative and art-making processes.
- VA:Cr2.1.8a Demonstrate willingness to experiment, innovate, and take risks to pursue ideas, forms, and meanings that emerge in the process of art-making or designing.
- VA:Cr1.1.7a Apply methods to overcome creative blocks.

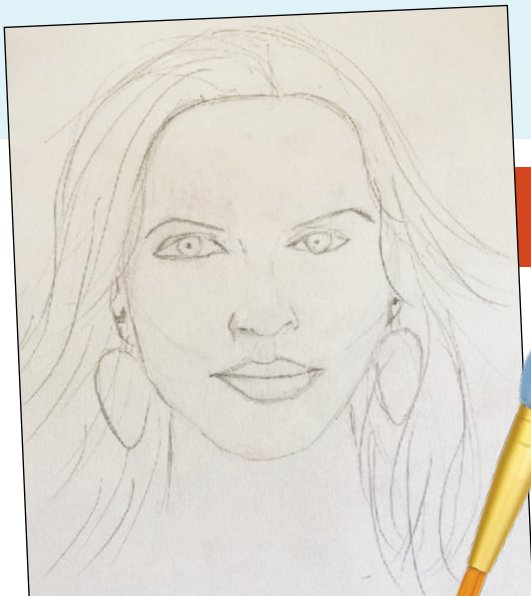


### ACCOMMODATIONS:

- Read directions
- Repeat and clarify
- Provide written instructions
- Visual aids
- Drawn directions
- Instructional videos
- Preferred seating
- ELL - use subtitles, translator, and dictionary

## Supply list:

- Royal Langnickel Gouache
- Assorted round brushes
- Watercolor paper
- Water for brushes
- Paper towel to dry off brush
- Pencil
- Eraser
- Reference photos



## Start creating!

1. Have students select images from a variety of black and white photos.
2. Sketch major details like the shape of the face, the hair, and the outline of clothing.
3. Introduce gouache and explain its opacity, as well as how it activates with water depending on the amount used.
4. Provide examples, and set students free to paint!



Share your creations and follow us!

@royallangnickelclassroom



Or visit us on the web at [art.royalbrush.com](http://art.royalbrush.com)